



motoalliance

23001 Industrial Blvd, Rogers, MN 55374 / 1-866-527-7637
www.motoalliance.com

MOTOALLIANCE WINCH MOUNT

MA11606

2005-2010 Polaris Sportsman

Thank you for purchasing our MotoAlliance winch mount. You now own a premium custom winch mount allowing you to use your winch with your ATV. Please note the following instructions and heed all warnings.

- Please use common sense when operating your ATV
- Read your Winch Operator's Manual and all other Operator Manuals including warning labels, before operating your ATV
- Be observant of moving parts causing entanglement use extreme caution!

SEVERE INJURY OR DEATH MAY RESULT IF YOU ARE NEGLIGENT.

Please verify that all hardware and parts are included in your package.

Kit Content:

Item Number	Description	Quantity
1	Winch Plate	1
2	Fairlead Support Bracket	1
3	5/16 x 1 1/4" Self Tapping Screw	4

Exploded View

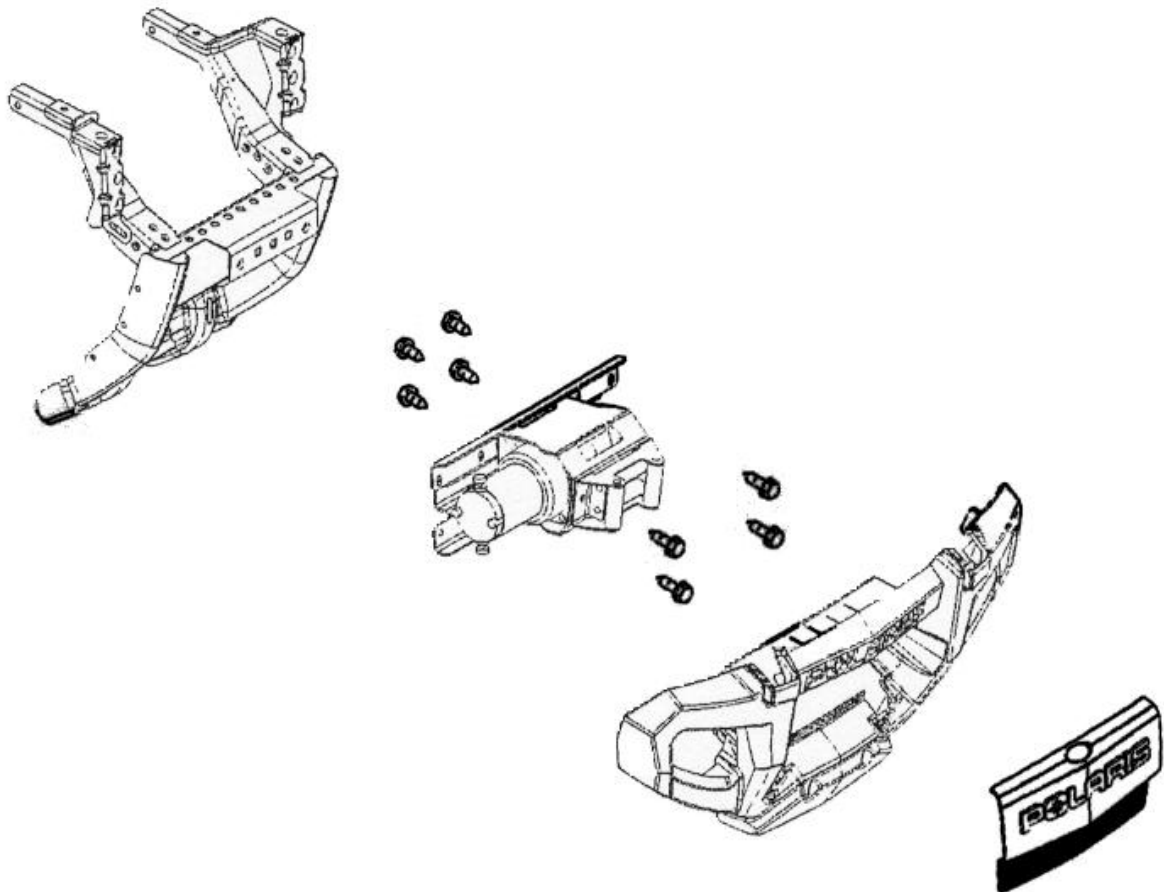


Figure 1

1. Remove the seat and disconnect the positive (red) and negative (black) wires from the battery using a 10mm wrench.
2. Disconnect the left-hand and right-hand access headlight plugs. These are located just behind the headlights. Remove the bumper access cover by snapping out the bottom tabs then lifting up. Remove the four bolts holding the front bumper and remove the bumper. See Figures 1a and 1b



Figure 1a



Figure 1b

3. Remove the three Phillips head screws securing the upper headlight pod. Loosen the top to the pod. Remove the main access cover in the front storage box. Remove the front bulkhead access cover. This cover is located just below the headlight pod. Also remove the access panel in the front storage box. See Figures 2 and 3



Figure 2

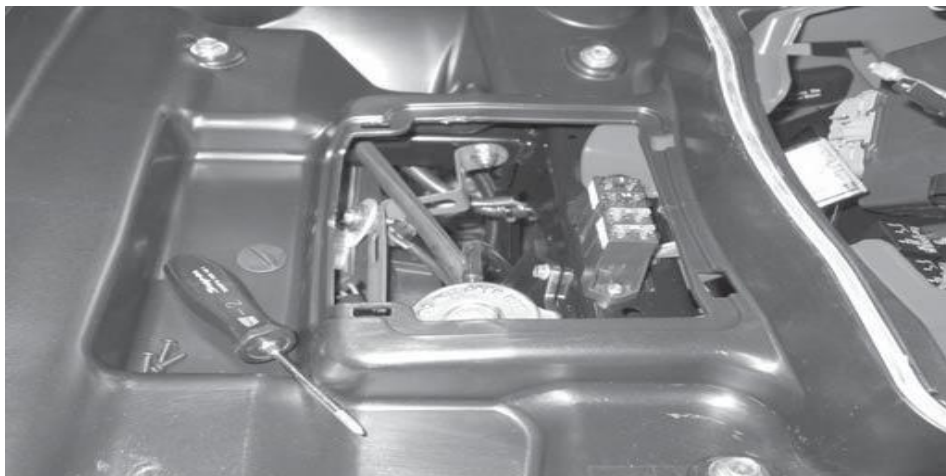


Figure 3

4. Note: on X2 models only, remove the pre-installed winch mounting plate located on the front bumper support and discard.
5. Attach the winch to the mounting plate and the fairlead support plate using the four hex head cap screws and lock washer that came in the winch hardware kit. Also at this time attach the roller fairlead to the fairlead bracket and attach the clevis hook to the wire rope.
6. The contactor will be located back near the battery. A suggested mounting location is inside the rear storage compartment. If attaching the contactor in the storage box, a hole will need to be cut into the back of the box to allow the cabling to be routed to the battery, winch, and handle bar switch. See Figure 4



Figure 4

7. After selecting a contactor location secure the contactor into position with the hex cap screws, flat washers and hex nuts. Route the blue and yellow wires from the contactor location along the frame and up to the front of the ATV. The cables will need to be routed to come out on the right side of the ATV so they can be attached to the winch motor.

8. Route the battery cables from the contactor location to the battery compartment. **Do not connect at this time.** Using the four 5/16-18 x 1 1/4 self tapping hex bolts attach the mounting plate with winch to the ATV frame. Take care not to pinch any wiring in the process. See Figures 5 and 6.



Figure 5

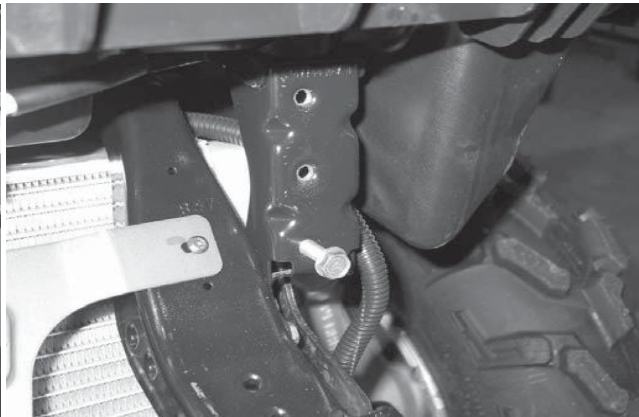


Figure 6

9. Run the motor terminal cables through the larger, oval hole located in the mounting plate. Attach the yellow and blue cables to the appropriate motor terminals, the terminals are color coded. Note: if you purchased a VIPER MAX or ELITE series winch, protect your connection with the battery boots provided.
10. Place the bumper back into position and attach using the factory hardware removed in step two.
11. NOTE: If you purchased our MX3500-MX5000 winch series, you may need to trim away 1/4" of the plastic factor bumper as it is a tight squeeze. You will then be able to access the free-spool knob with your index finger.

MotoAlliance
MA11606 2005-2010 Polaris Sportsman



motoalliance
23001 Industrial Blvd
Rogers, MN 55374
866.527.7637

